



Meeting: 4th Tuesday of Month (Check website for date change)
2nd Floor Philippe The Original, 6:45 – 8:40 p.m.
1001 N. Alameda St. Los Angeles CA. 90012

After you get your food, we will move to a second floor meeting room, BUT first.... we gather at the table near the "front door" next to cash register for an informal get-together and then after most have arrived, we then go upstairs for the formal meeting.

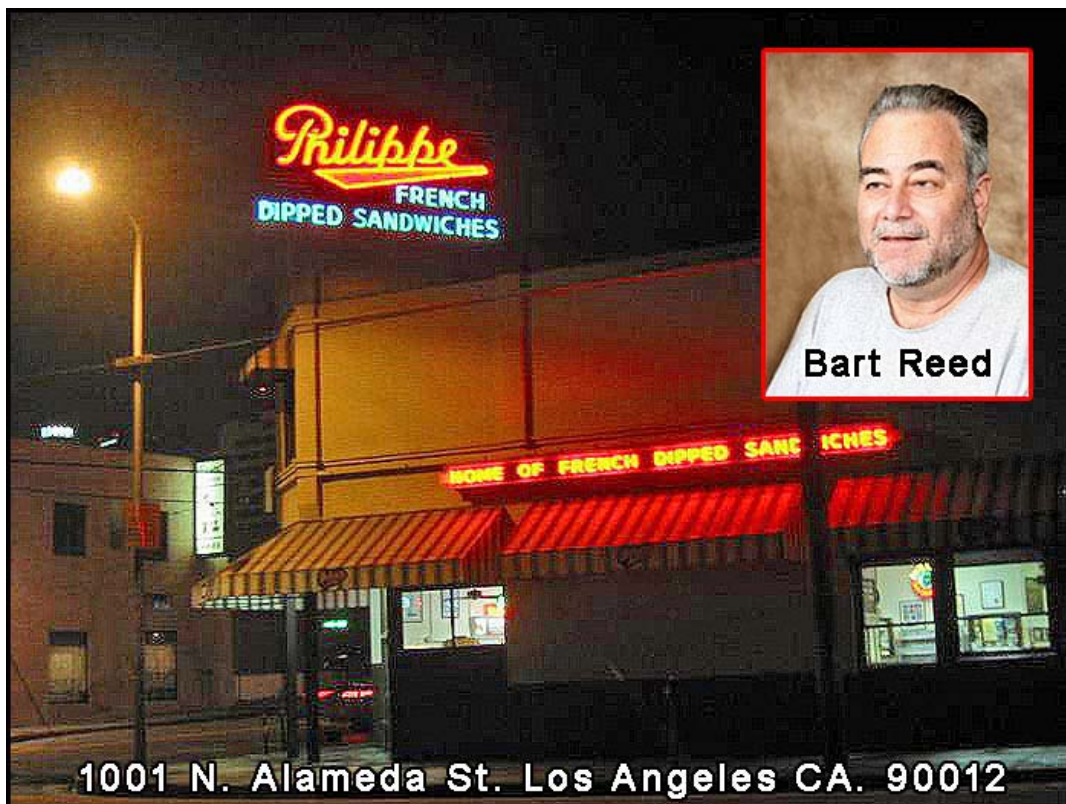
Check near the cash register to see if we are there, if not, enter the upstairs on the Alameda Street side of Philippe The Original restaurant, as the west side has a sign that says the upstairs is closed.

Beware of the trick by the restaurant. After we go up, they put the closed sign back up. We will be up there, but please call Bart Reed's cell phone at 818-419-1671, if you can't figure out where we are!

Please RSVP Bart Reed at 818-367-1661 to confirm. This way we will look for you before going upstairs.

The meeting will consist of Introductions, Brief Updates, Project Updates, and other Transit Related information.

To help you identify Bart Reed, his picture follows below.



The regular meeting's agenda and handouts when available will replace this page.